



DEMAG
POWER GENERATOR

DMG-Pseries

diesel generator set

DEMAG
POWER GENERATOR

Perkins®

Standby	Prime
165 kVA 132 kW	150 kVA 120 kW

	Cabinet / Uncabinet
	Diesel
	Water Cooling
	50 Hz / 60 Hz
	3 Phase - 230/400 V

Standby Power (ESP): : In case of failure of reliable mains supply, variable electricity is used to power the load. ESP complies with ISO8528. Overloading is not allowed.

Prime Power (PRP): : Variable electricity to load, power supply, yearly unlimited operation used for the clock. PRP complies with ISO 8528. 12 hours of operation according to ISO3046 Used for 10% overload for 1 hour in the period.



Engine

In DEMAG Generator e products; High performance, low fuel consumption, mechanical or electronic governor depending on the type, Oil, air, fuel filters are interchangeable, using high technology engine brands in accordance with ISO 3046, ISO 8528, BS 5514, DIN 6271 standards

Engine Specifications

Engine Brand	PERKINS
Engine Model	1106A-70TAG2
Engine Power	144 kW / 131 kW (Standby/Prime)
Speed (rpm)	1500
Time	4
Number of Cylinders	6
Engine Capacity	7,01 lt
Bore & Stroke (mm x mm)	105x135
Compression Ratio	16:01
Governor Type	Mechanical
Induction System	Turbocharge / Intercooler
Combustion System	Direct
Cooling System	Water Cooling
Lubrication System	16 lt
Coolant Capacity	21 lt
Fuel	%100
Consumption	%75
liter/hour	%50

Alternator

In DEMAG Generator r alternator products, it has a steel body design, robust structure, maintenance-free bearing system (brushless) with self-excitation system, electronic type voltage regulator, BS 4999-5000; CEI EN 60034-1; IEC 60034-1; VDE 0530, OVE M10, NF 51-100, 111; It uses high technology alternator brands in accordance with NEMA MG 1.22.

Alternator Features

Power Factor	0,8
Insulation	H
Protection	IP21-IP23
Output Voltage	231/400 VAC - 50Hz
Frequency	50 Hz
Connection Type	Star
Design	4 Poles - Brushless

Control System

Easy-to-use secure software updates in **DEMAG Generator** control panels have a structure that can be easily done with USB ports. Optionally, remote control can be provided with ETHERNET and GPRS. Panel body is made of steel sheet and is painted with electrostatic powder paint. It has been painted. The electronics are isolated and waterproof design.

Control System Features

LCD Screen Automatic Control System

Remote Monitoring System

Multifunctional Business Opportunity

Multi Language Support

Programmable over USB, RS-232 and GSM



Chassis, Canopy and Fuel Tanks

DEMAG Generator chassis has a modular design and is made of steel. Engine alternator Radiator connections are made with vibration wedges and vibration is minimized. Special chassis and fuel tank in line with customer demands can make designs.

Canopy

Canopy design that facilitates generator maintenance

Emergency stop button on the cabin

Transparent control cabinet window

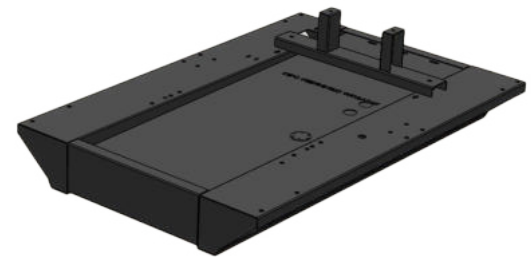
Acoustic sponge providing sound insulation

Hidden exhaust silencer inside the cabin

Engine cooling air ducts

Electrostatic powder paint resistant to corrosion and rusting

Refueling outside the cabin



Options

Transfer Board

Protection Switch

External Type Fuel Tank

Synchronous System

Electronic Governor Application

Earthquake Sensor

Analog Gauges

24 Hour Fuel Tank

Special Chassis Color

Special Cabinet Color

Remote Monitoring Module

Special Type Muffler

Quality Standards

All generating sets produced by **DEMAG Generator** have TSE, CE and ISO 9001 certificates.

Technical information and values are in accordance with ISO8528, ISO3046, NEMA MG1.22, IEC 600341, BS 49995000, VDE 0530 standards.

Technical Dimensions

Cabinet Group

Width	Length	Height	Weight	Fuel Tank
1100 mm	3100 mm	1690 mm	2095 kg	275 lt

Uncabinet Group

Width	Length	Height	Weight	Fuel Tank
1100 mm	2600 mm	1690 mm	1842 kg	275 lt

