



**DEMAG**  
POWER GENERATOR



# DMG-Pseries

## diesel generator set

**DEMAG**  
POWER GENERATOR

**Perkins®**

| Standby | Prime   |
|---------|---------|
| 785 kVA | 715 kVA |
| 628 kW  | 572 kW  |

|  |                     |
|--|---------------------|
|  | Cabinet / Uncabinet |
|  | Diesel              |
|  | Water Cooling       |
|  | 50 Hz / 60 Hz       |
|  | 3 Phase - 230/400 V |

**Standby Power (ESP):** : In case of failure of reliable mains supply, variable electricity is used to power the load. ESP complies with ISO8528. Overloading is not allowed.

**Prime Power (PRP):** : Variable electricity to load, power supply, yearly unlimited operation used for the clock. PRP complies with ISO 8528. 12 hours of operation according to ISO3046 Used for 10% overload for 1 hour in the period.



## Engine

In DEMAG Generator engine products; High performance, low fuel consumption, mechanical or electronic governor depending on the type, Oil, air, fuel filters are interchangeable, using high technology engine brands in accordance with ISO 3046, ISO 8528, BS 5514, DIN 6271 standards.

### Engine Specifications

|                         |                                 |
|-------------------------|---------------------------------|
| Engine Brand            | PERKINS                         |
| Engine Model            | 2806A-E18TTAG4                  |
| Engine Power            | 685 kW / 623 kW (Standby/Prime) |
| Speed (rpm)             | 1500                            |
| Time                    | 4                               |
| Number of Cylinders     | 6                               |
| Engine Capacity         | 18,1 lt                         |
| Bore & Stroke (mm x mm) | 145x183                         |
| Compression Ratio       | 14:1                            |
| Governor Type           | Electronic                      |
| Induction System        | Turbocharge / Intercooler       |
| Combustion System       | Direct                          |
| Cooling System          | Water Cooling                   |
| Lubrication System      | 72 lt                           |
| Coolant Capacity        | 110 lt                          |
| Fuel                    | %100                            |
| Consumption             | %75                             |
| liter/hour              | %50                             |

## Alternator

In DEMAG Generator alternator products, it has a steel body design, robust structure, maintenance-free bearing system (brushless) with self-excitation system, electronic type voltage regulator, BS 4999-5000; CEI EN 60034-1; IEC 60034-1; VDE 0530, OVE M10, NF 51-100, 111; It uses high technology alternator brands in accordance with NEMA MG 122.

### Alternator Features

|                 |                     |
|-----------------|---------------------|
| Power Factor    | 0,8                 |
| Insulation      | H                   |
| Protection      | IP21-IP23           |
| Output Voltage  | 231/400 VAC - 50Hz  |
| Frequency       | 50 Hz               |
| Connection Type | Star                |
| Design          | 4 Poles - Brushless |

## Control System

Easy-to-use secure software updates in **DEMAG Generator** control panels have a structure that can be easily done with USB ports. Optionally, remote control can be provided with ETHERNET and GPRS. Panel body is made of steel sheet and is painted with electrostatic powder paint. It has been painted. The electronics are isolated and waterproof design.

### Control System Features

LCD Screen Automatic Control System

Remote Monitoring System

Multifunctional Business Opportunity

Multi Language Support

Programmable over USB, RS-232 and GSM



## Chassis, Canopy and Fuel Tanks

**DEMAG Generator** chassis has a modular design and is made of steel. Engine alternator Radiator connections are made with vibration wedges and vibration is minimized. Special chassis and fuel tank in line with customer demands can make designs.

### Canopy

Canopy design that facilitates generator maintenance

Emergency stop button on the cabin

Transparent control cabinet window

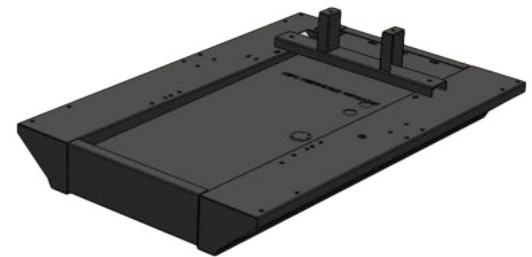
Acoustic sponge providing sound insulation

Hidden exhaust silencer inside the cabin

Engine cooling air ducts

Electrostatic powder paint resistant to corrosion and rusting

Refueling outside the cabin



### Options

Transfer Board

Protection Switch

External Type Fuel Tank

Synchronous System

Electronic Governor Application

Earthquake Sensor

Analog Gauges

24 Hour Fuel Tank

Special Chassis Color

Special Cabinet Color

Remote Monitoring Module

Special Type Muffler

## Quality Standards

All generating sets produced by **DEMAG Generator** have TSE, CE and ISO 9001 certificates.

Technical information and values are in accordance with ISO8528, ISO3046, NEMA MG1.22, IEC 600341, BS 49995000, VDE 0530 standards.

### Technical Dimensions

#### Cabinet Group

| Width   | Length  | Height  | Weight  | Fuel Tank |
|---------|---------|---------|---------|-----------|
| 1800 mm | 4800 mm | 3115 mm | 8701 kg | 1704 lt   |

#### Uncabinet Group

| Width   | Length  | Height  | Weight  | Fuel Tank |
|---------|---------|---------|---------|-----------|
| 1800 mm | 4290 mm | 2475 mm | 7056 kg | 1704 lt   |

